



Since 1983, Founded by Wayne Reinecke

Pasadena Community Orchestra

2020 - 2021 CONCERT SEASON

*Experience wonderful
music with us!*

Pasadena Community Orchestra

Pasadena Community Orchestra's vision has consistently been to bring beautiful music to the community, free of charge. Formed in 1983 by a group of classical musicians, led by conductor Wayne Reinecke, the orchestra consists of musicians from many walks of life; they are medical professionals, lawyers, teachers, students, scientists, local business people, and retirees – all of whom love music and are willing to give their time for the opportunity to bring beautiful music to life.

In a typical season, PCO performs four concerts in the sanctuary of the First Church of the Nazarene in Pasadena. A more intimate Chamber Music Gala is held once a year, featuring local artists. The orchestra also sponsors a Young Artist Competition, whose winner has the opportunity to perform with the orchestra in May. A Pops concert in Sierra Madre Memorial Park in June finishes out the season.



www.pcomusic.org



THE ORCHESTRA

A full-size, 70-piece symphony comprised of talented musicians, in its 36th year of bringing live music to Pasadena.

Concert Location & Time
First Church of the Nazarene
3700 East Sierra Madre Blvd
Pasadena, CA 91107
8:00 PM

*“Who hears music,
feels his solitude
peopled at once.”*

- Robert Browning



BETHANY PFLUEGER
MUSIC DIRECTOR



MARY HOUSE
BOARD PRESIDENT

TO OUR DEAR AND LOYAL AUDIENCE AND DONORS

We hope this brochure – with expectations of live performances in 2021 – finds you and those you love healthy and safe. Like every music organization worldwide, we face an unprecedented year of adjustments to our usual music-making schedules, but we look ahead with hope and confidence. Music is vital to our well-being as individuals and as a society, so we continue to make plans for music this season. With restrictions lifted, we stand ready to perform, within all health guidelines. We ask that you continue to support us. Times have gotten harder for everyone, but a donation in any amount will be treasured and greatly appreciated. Meanwhile, small groups within the orchestra have formed and will be filmed. These performances will be posted to our website. Orchestra members are engaging in educational outreach to our local schools. We want everyone to continue to appreciate music as an audience member or performer. CHECK OUR WEBSITE FOR THESE EXCITING OPPORTUNITIES! Please provide us with your email address via our website or send the attached form with it noted, even if you are unable to make a donation.

To a future free of health concerns and full of live, classical musical performances,

Mary House, Board President + Beth Pflueger, Music Director.

NOV 6, 2020

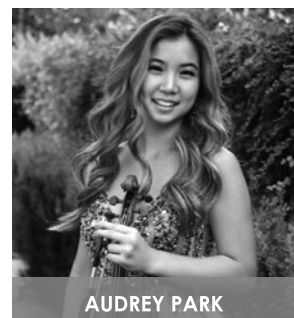
Website & Social Media postings of great performances from the past, and current chamber music performances by PCO members. Follow us on FB, Instagram, Twitter and YouTube.

JAN 15, 2021

SCARLATTI Concerto Grosso No. 3 in F Major
WARLOCK Capriol Suite
MENDELSSOHN Sinfonia No. 3 in e minor
HIGDON To the Point

MARCH 5, 2021

VIVALDI Concerto RV 151
MOZART Sinfonia Concertante K. 297b, featuring PCO soloists
BRAHMS Violin Concerto No. 1, featuring 2020 Young Artist Winner, Audrey Park



AUDREY PARK



THE ORCHESTRA

A full-size, 70-piece symphony comprised of talented musicians, in its 36th year of bringing live music to Pasadena.

PCO is a non-profit organization supported by donations from individuals and foundations that recognize the importance of bringing great classical music to the local community.

Pasadena Community Orchestra Foundation
P.O. Box 92917
Pasadena, CA 91109-2917

MAY 7, 2021

ROSSINI La Gazza
Ladra Overture
ZWILICH Upbeat
DVORAK Humoresque
SMETANA Moldau
YOUNG ARTIST
COMPETITION WINNER

JUNE, 2021 (TBD)


Summer concert in the park at Sierra Madre Memorial Park
6:30 p.m. A fun, family event to close the season!
Visit our website for additional concert information.

9th Annual Chamber Music Gala + Fundraiser (TBD)

An opportunity to enjoy chamber music in a small private setting. Join us for wine and hor d'oeuvres, enjoy the concert, and meet the artists over dessert. Visit our website for additional concert information.

Pasadena Board of Directors

Donald Fisher	Hon Hong-yi	Eric Kirchhoff
Thom Fountain	Mary House	Beth Pflueger
Gary Green	Joe Kertes	Stephen Unwin

 626.445.6708

 pcoemails@gmail.com

 www.pcomusic.org



THANK YOU FOR YOUR GENEROUS DONATION

Name (as you wish to be listed) _____

Name (donation in remembrance of a loved one) _____

Address _____ City _____

State _____ Zip _____ E-mail _____

- Add to email list?
- Remove from physical mailing list?
- Yes! I will help with a generous donation.

Enclosed is my tax deductible contribution of \$ _____

Categories of Giving

\$10 To \$59.....Friend
\$60 To \$99.....Sponsor
\$100 To \$249.....Patron

\$250 To \$499.....Chair Sponsor
\$500 To \$999.....Conductor's Podium
\$1000 And Up.....Major Benefactor

Donations at the Sponsor level and above will be listed in each program.

Send To: Pasadena Community Orchestra Foundation
P.O. Box 92917, Pasadena, CA 91109-2917
Donate online: www.pcomusic.org/support



Pasadena Community Orchestra
Since 1983, Founded by Wayne Reinecke



PCO is funded, in part, by City of Pasadena Arts & Culture Commission, LA County Arts Commission and Pasadena Showcase House for the Arts.